



www.airpho.com

About Us

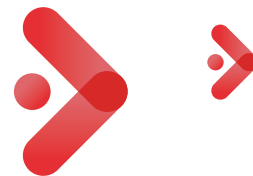
With the continuous evolution of network products, people are becoming more dependent on the Internet, and their demand for high-quality network environments is also rising.

Airpho, an innovative network device manufacturer, is here to provide cost-efficient, robust-built networking devices to make people's networking live easier and more comfortable. We offer a wide range of networking devices including **wireless routers, Wi-Fi range extenders, wireless USB adapters, DSL modem routers and Ethernet switches.**

The complex requirements of today's market call for robust products, that's why we opened new factories to strengthen our production ability and continuously invested in R&D to enrich our product range.

We are looking forward to stand with you as we tackle new challenges and embrace new opportunities as a unified team.





11 Years' Experience

The core team has more than 11 years of sales and production management experience.

2 Manufacturing Centers

Airpho has 2 Manufacturing Centers in Shenzhen and Jiangxi respectively, accounting total production capacity 30 million units per year.

2 R&D Team

One R&D team in Shenzhen headquarters and one R&D center in Chengdu with total 50+ R&D engineers.



Our Strength



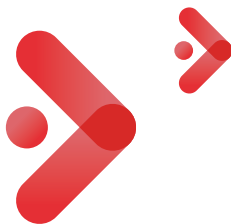
CONTENTS

Whole Home Wi-Fi System

- | | | |
|---|----------|--|
| 1 | AR-M400 | AC1200 Dual Band Whole Home Mesh WiFi System |
| 4 | AR-M400P | AC1200 Wall-plugged Mesh WiFi System |
| 4 | AR-M405 | AC1200 Dual Band Whole Home Mesh WiFi System |

Wireless Router

- | | | |
|----|---------|--|
| 5 | AR-W800 | AC2600 Wireless Dual Band Gigabit Router |
| 7 | AR-W700 | AC1900 Wireless Dual Band Gigabit Router |
| 8 | AR-W415 | AC1200 Wireless Dual Band Gigabit Router |
| 9 | AR-W410 | AC1200 Wireless Dual Band Gigabit Router |
| 9 | AR-W400 | AC1200 Wireless Dual Band Router |
| 10 | AR-W210 | N300 Wireless Router |
| 10 | AR-W200 | N300 Wireless Router |



Wi-Fi Range Extender

11	AR-E350	AC750 WiFi Dual Band Range Extender
13	AR-E400	AC1200 WiFi Dual Band Range Extender
14	AR-E200	N300 WiFi Range Extender
14	AR-E210	N300 WiFi USB Range extender

Adapter

15	AR-A300	AC600 Wireless Dual Band USB Adapter
16	AR-A200	N300 Wireless USB Adapter
16	AR-A100	N150 Wireless USB Adapter

Ethernet Switch

17	AR-GS224	24-Port Gigabit Rackmount Switch
17	AR-GS216	16-Port Gigabit Rackmount Switch
18	AR-GS108	8-Port Gigabit Desktop Switch
18	AR-GS105	5-Port Gigabit Desktop Switch
19	AR-FS224	24-Port Fast Ethernet Rackmount Switch
19	AR-FS116	16-Port Fast Ethernet Desktop Switch
20	AR-FS108	8-Port Fast Ethernet Desktop Switch
20	AR-FS105	5-Port Fast Ethernet Desktop Switch
21	AR-FS109P	9-Port Fast Ethernet PoE Desktop Switch
21	AR-FS105P	5-Port Fast Ethernet PoE Desktop Switch

GPON

23	AR-P600	AC1750 Wireless Dual Band Gigabit VoIP GPON Router
25	AR-P200CA	N300 Wireless Gigabit VoIP CATV GPON Router
26	AR-P400	AC1200 Wireless Dual Band Gigabit VoIP GPON Router
26	AR-P200	N300 Wireless Gigabit VoIP GPON Router
27	AR-P220	N300 Wireless Gigabit VoIP GPON Router
27	AR-P01	One Port Wired Gigabit GPON Terminal

DSL Modem Router

29	AR-V400	AC1200 Wireless Dual Band Gigabit VDSL Modem Router
31	AR-V600L	AC1750 Wireless Dual Band Gigabit VoIP LTE VDSL Modem Router
32	AR-V600	AC1750 Wireless Dual Band Gigabit VoIP VDSL Modem Router
33	AR-V400V	AC1200 Wireless Dual Band Gigabit VoIP VDSL Modem Router
33	AR-V200V	N300 Wireless VoIP VDSL Modem Router
34	AR-V200	N300 Wireless VDSL Modem Router
34	AR-D200	N300 Wireless ADSL2+ Modem Router

Home Gateway

35	AR-GW600	AC1750 Wireless Dual Band Gigabit VoIP Gateway
36	AR-GW400	AC1200 Wireless Dual Band Gigabit VoIP Gateway
36	AR-GW200	N300 Wireless VoIP Gateway

Whole Home WiFi System

Add More Units to Expand Coverage

Expanding network coverage in a mesh system is much easier than using the traditional combination of “router-extenders”. Simply add one more mesh unit to the system to boost your WiFi coverage.



1 mesh
2000sq.ft



2 mesh
4000sq.ft



3 mesh
6000sq.ft

Centralized Mesh Network Management

All mesh units can be managed through one backstage. This gets rid of the need to manage separately on each device. Meanwhile, it gives you a better control of overall network usage.



AC1200 Dual Band Whole Home
Mesh WiFi System

AR-M400



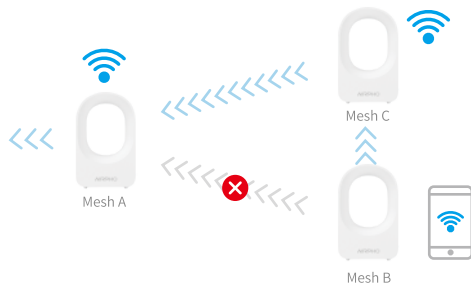
Intelligent Routing between Different Nodes

In a mesh system, a mesh unit can always detect and select the optimal routing from other available mesh units automatically. This, on one hand, ensures outstanding network performance; on the other hand, guarantees the stability of your network.

Mesh Routing Optimization

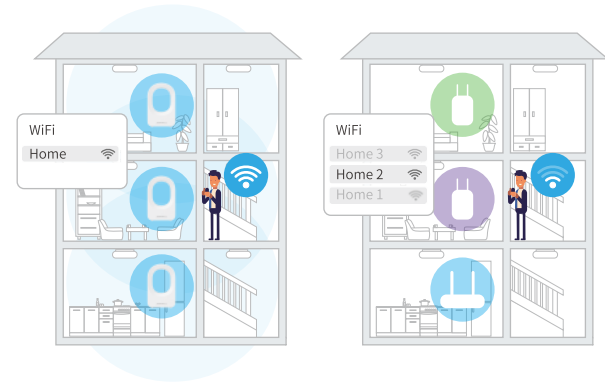


Switch Routing when Connection is Lost



True Seamless Network Throughout the House

All the mesh units make up to one unified network using one universal SSID. This ensures your devices remain connected during handover to the next networking area.





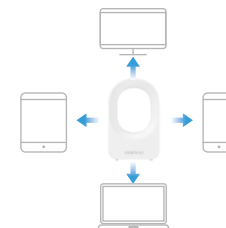
Beamforming

Beamforming makes it possible to send directional signal. It promises a faster, stronger WiFi signal with longer range for each device.



MU-MIMO

MU-MIMO technology enables the mesh to communicate multiple devices simultaneously, effectively improve network communication efficiency.



Full Gigabit Ports

Gigabit Ethernet ports transfer data 10x faster than standard Fast Ethernet ports. This ensure you enjoy the full speed of 802.11AC WiFi.

1X	Fast Ethernet
10X	Gigabit Ethernet

Highest Wireless Speed	1200Mbps
Frequency	2.4GHz and 5GHz
Antennas	2*5dBi dual band antennas
Interface	1 Gigabit Ethernet WAN/LAN port 1 Gigabit Ethernet LAN port
LED Indicator	Intelligent LED Indicator
Security	WPA2-PSK(default)



MU-MIMO



QoS



Parental
Controls



Guest
Network



AR-M400P

AC1200 Wall-plugged Mesh WiFi System

Highest Wireless Speed	1200Mbps
Frequency	2.4GHz and 5GHz
Antennas	2 x 3dBi dual band antennas
Interface	1 x 10/100Mbps LAN Port
LED Indicator	Intelligent LED Indicator
Security	WPA2-PSK(default)



MU-MIMO



QoS



Parental
Controls



Guest
Network

AR-M405

AC1200 Dual Band Whole Home Mesh WiFi System

Highest Wireless Speed	1200Mbps
Frequency	2.4GHz and 5GHz
Antennas	2 x 3dBi dual band antennas
Interface	1 Gigabit Ethernet WAN/LAN Port 1 Gigabit Ethernet LAN Port
LED Indicator	Intelligent LED Indicator
Security	WPA2-PSK(default)



MU-MIMO



QoS



Parental
Controls



Guest
Network

Wireless Router

AR-W800

AC2600 Wireless Dual Band Gigabit Router



Ultrafast Wireless Speeds of 2.6Gbps

With selectable 2.4GHz and 5GHz bands, you can connect more devices at once and run multiple network tasks without interference.

2.4GHz
800Mbps

5GHz
1733Mbps



Secure Cloud and Printer Sharing via USB port

With the USB2.0 port, you can create a secure personal cloud and gives any connected user access to the hard drive's contents, or connect to a shared printer that allows you to print wirelessly from any PC or Mac.



USB2.0 Port

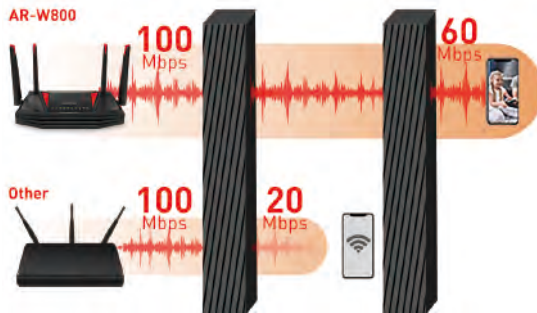
Beamforming

Beamforming technology dramatically improves wireless coverage by locating WiFi devices and sending stronger, more stable directional signals.



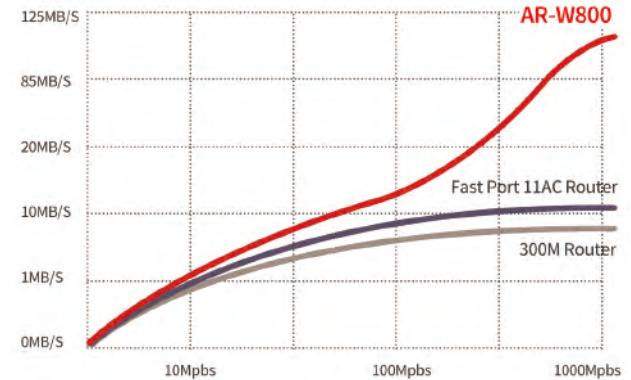
Far-Reaching WiFi with Ultimate Wall Penetrating Ability.

The powerful front-end module (FEM) deliver amplified WiFi signals to every corner of your home, greatly improve WiFi penetrating ability.
5GHz Front End Module



Full Gigabit Ports Allow You to Enjoy the Full Speed of 200M Broadband

With full gigabit ports, wired speeds can be up 10 times faster than standard fast Ethernet ports. It unlocks your network potential when your broadband access is over 200M.



Highest Wireless Speed	2600Mbps
Frequency	2.4GHz and 5GHz
Antennas	4 x 5dBi external dual band antennas
Interface	1 x 10/100/1000Mbps WAN Port 4 x 10/100/1000Mbps LAN Ports 1 x USB2.0 Port
Processor	Dual Core Processor
WPS Button	Support
Flash DDR	16MB/128MB
Power Supply	DC 12V2A
Security	WEP, WPA / WPA2, WPA-PSK/ WPA2-PSK encryption



AR-W700

AC1900 Wireless Dual Band Gigabit Router

Highest Wireless Speed	1900Mbps
Frequency	2.4GHz and 5GHz
Antennas	3 x 5dBi external dual band antennas
Interface	1 x 10/100/1000Mbps WAN Port 3 x 10/100/1000Mbps LAN Ports 1 x USB2.0 Port
Processor	Dual Core Processor
WPS Button	Support
Flash DDR	16MB/128MB
Power Supply	DC 12V1.5A
Security	WEP, WPA / WPA2, WPA-PSK/ WPA2-PSK encryption



Beamforming



MU-MIMO



QoS



Parental
Controls



Guest
Network



USB Sharing





AR-W415

AC1200 Wireless Dual Band Gigabit Router

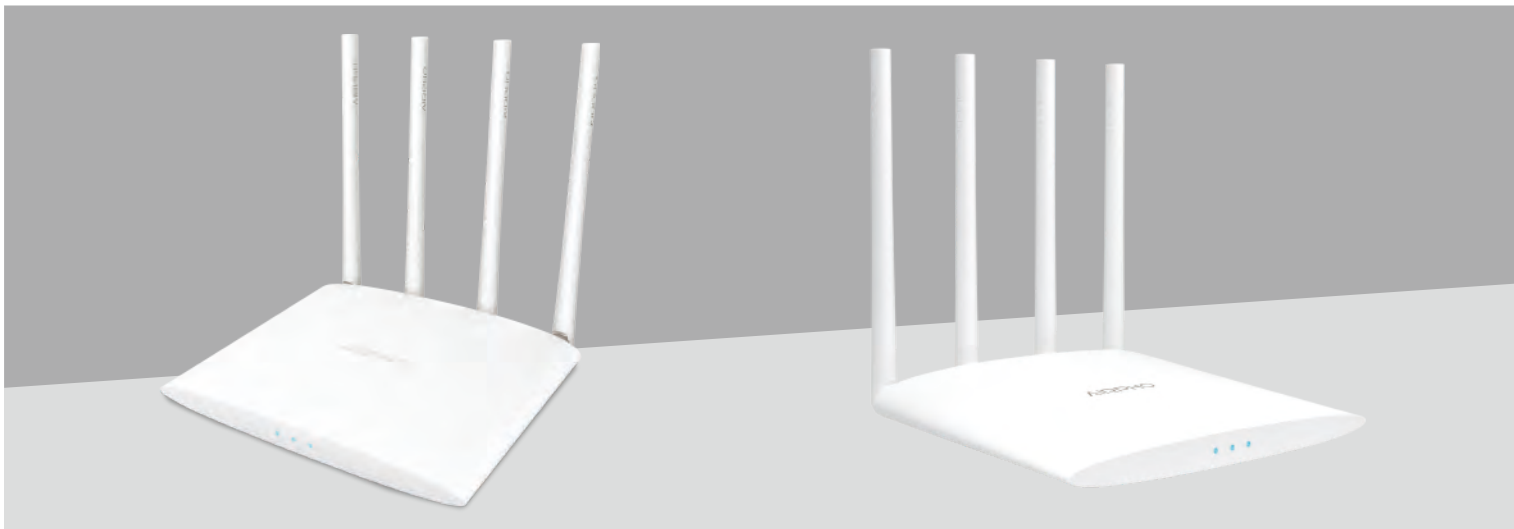
Highest Wireless Speed	1200Mbps
Frequency	2.4GHz and 5GHz
Antennas	4 x 5dBi external dual band antennas
Interface	1 x 10/100/1000Mbps WAN Port 4 x 10/100/1000Mbps LAN Ports
WPS Button	Support
Flash DDR	16MB/128MB
Power Supply	DC 12V1.0A
Security	WEP, WPA / WPA2, WPA-PSK/ WPA2-PSK encryption



QoS

Parental
ControlsGuest
Network

MU-MIMO



AR-W410

AC1200 Wireless Dual Band Gigabit Router

Highest Wireless Speed	1200Mbps
Frequency	2.4GHz and 5GHz
Antennas	4 x 5dBi external antennas
Interface	1 x 10/100/1000Mbps WAN Port
	2 x 10/100/1000Mbps LAN Ports
	1 x USB2.0 Port
Processor	Dual Core Processor
WPS Button	Support
Flash DDR	16MB/128MB
Power Supply	DC 12V1.5A
Security	WEP, WPA / WPA2, WPA-PSK/ WPA2-PSK encryption



IPv6



QoS

Parental
ControlsGuest
Network

USB Sharing

AR-W400

AC1200 Wireless Dual Band Router

Highest Wireless Speed	1200Mbps
Frequency	2.4GHz and 5GHz
Antennas	4 x 5dBi external antennas
Interface	1 x 10/100Mbps WAN Port
	2 x 10/100Mbps LAN Ports
WPS Button	Support
Flash DDR	16MB/64MB
Power Supply	DC 12V1.0A
Security	WEP, WPA / WPA2, WPA-PSK/ WPA2-PSK encryption



IPv6



QoS

Parental
ControlsGuest
Network



AR-W210

N300 Wireless Router

Highest Wireless Speed	300Mbps
Frequency	2.4GHz
Antennas	2 x 5dBi external antennas
Interface	1 x 10/100Mbps WAN Port 2 x 10/100Mbps LAN Ports
Flash DDR	2MB/8MB
Power Supply	DC 5V 550MA
Security	WEP, WPA / WPA2, WPA-PSK/ WPA2-PSK encryption



QoS

Parental
ControlsGuest
Network

AR-W200

N300 Wireless Router

Highest Wireless Speed	300Mbps
Frequency	2.4GHz
Antennas	2 x 5dBi external antennas
Interface	1 x 10/100Mbps WAN Port 4 x 10/100Mbps LAN Ports
WPS Button	Support
Flash DDR	8MB/64MB
Power Supply	DC 12V 0.5A
Security	WPA / WPA2, WPA-PSK/ WPA2-PSK encryption



QoS

Parental
ControlsGuest
Network

IPv6



AR-E350

AC750 WiFi Dual Band
Range Extender

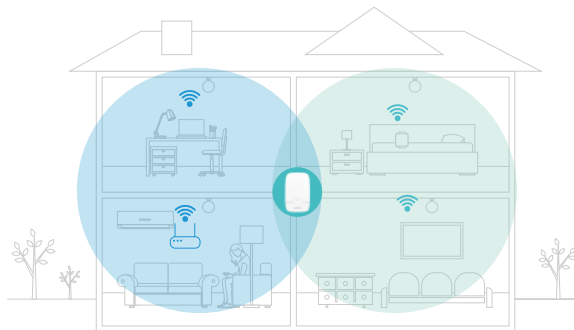
WiFi Range Extender



Expand Your WiFi to Where Your Router Cannot Reach

Use the AR-E350 dual band Wi-Fi Range extender to
boost your existing WiFi coverage to the farthest
corner of your house.

Existing WiFi Coverage with Standard Router
AC750 Dual Band WiFi Range Extender



Angled Surface

Makes it easier for users to interact with the WPS button and more comfortable to read the light status from a remote distance.



Ethernet Port

Provides connections to your wired devices as well.



Intelligent Light Indicator

Indicate signal strength with different LED colors to help find the best placement.

WPS Button

Eliminates the need for manual password configuration, saving time during setup.

Selectable 2.4GHz and 5GHz Dual Bands

You can enjoy HD Video streaming and lag-free online gaming on the 5GHz band while using the 2.4GHz band for daily tasks such as email checking and web browsing.



Highest Wireless Speed	750Mbps
Frequency	2.4GHz & 5GHz
Antennas	3 x 3dBi build-in antennas
LAN Port	1 x 10/100Mbps LAN Port
WPS button	Support
LED Indicator	Intelligent Signal Indicator
Security	WEP, WPA / WPA2, WPA-PSK/ WPA2-PSK encryption



Intelligent
Signal Indicator



Ethernet Port



WPS



AR-E400

AC1200 WiFi Dual Band Range Extender



Intelligent
Signal Indicator



Ethernet Port



WPS



Highest Wireless Speed	1200Mbps
Frequency	2.4GHz and 5GHz
Antennas	2 x 3dBi external dual band antennas
LAN Port	1 x 10/100Mbps LAN Port
WPS button	Support
LED Indicator	Intelligent Signal Indicator
Security	WEP, WPA / WPA2, WPA-PSK/ WPA2-PSK encryption



AR-E200

N300 WiFi Range Extender

Highest Wireless Speed	300Mbps
Frequency	2.4GHz
Antennas	2 x 2.4GHz 2dBi built-in antennas
LAN Port	1 x 10/100Mbps LAN Port
WPS button	Support
LED Indicator	Intelligent Signal Indicator
Security	WEP, WPA / WPA2, WPA-PSK/ WPA2-PSK encryption



Intelligent
Signal Indicator



Ethernet Port



WPS

AR-E210

N300 WiFi USB Range extender

Highest Wireless Speed	300Mbps
Frequency	2.4GHz
Antennas	2 x 2.4GHz 2dBi built-in antennas
LED Indicator	Intelligent Signal Indicator
Security	WEP, WPA / WPA2, WPA-PSK/ WPA2-PSK encryption



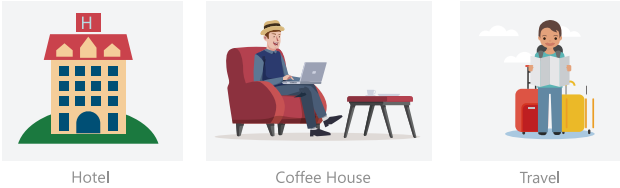
Perfectly Compatible with Major OS

The adapter is compatible with major OS including Windows 10, 8.1, 8, 7, XP, Mac OS X 10.7~10.10 and Linux.



Miniature Design Gives You Greater Portability

It is easy to be carried, which makes it a perfect choice for travelers and users who work outside the office.

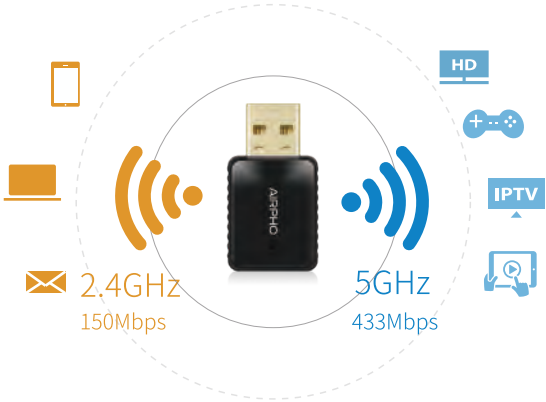


Enables WiFi on Your Desktop Computer

The AR-A300 wireless USB Adapter enables wireless network on your desktop computer or your older laptop computer. It also helps to fix your wireless connection when the built-in network card of your computer is broken.

Connect with the Next-Generation WiFi

The AC WiFi supports dual band wireless connection which provide faster wireless transfer rates than standard 802.11N. Users can select different band for different network purpose.



Highest Wireless Speed	600Mbps
Frequency	2.4 GHz & 5GHz
Antennas	Internal antennas
Interface	USB2.0
Security	Supports 64/128 bit WEP, WPA-PSK/ WPA2-PSK
System Requirement	Windows 10, 8.1, 8, 7, and Windows XP (32/64bit), Mac OS X 10.7~10.10, Linux
Installation	CD driver



AR-A200

N300 Wireless USB Adapter

Highest Wireless Speed	300Mbps
Frequency	2.4 GHz
Antennas	Internal antennas
Interface	USB2.0
Security	Supports 64/128 WEP, WPA/WPA2, WPA-PSK/WPA2-PSK
System Requirement	Windows 10, 8.1, 8, 7, and Windows XP (32/64bit), Mac OS X 10.7~10.10, Linux
Installation	CD driver

AR-A100

N150 Wireless USB Adapter

Highest Wireless Speed	150Mbps
Frequency	2.4 GHz
Antennas	Internal antennas
Interface	USB2.0
Security	Supports 64/128 WEP, WPA/WPA2, WPA-PSK/WPA2-PSK
System Requirement	Windows 10, 8.1, 8, 7, and Windows XP (32/64bit), Mac OS X 10.7~10.10, Linux
Installation	CD free

Switch



AR-GS224

24-Port Gigabit Rackmount Switch

Standards	IEEE 802.3, IEEE 802.3u, IEEE 802.3ab, IEEE 802.3x
Interfaces	24 x 10/100/1000Base-T Port
Forwarding Performance	39.28Mpps
MAC Address Table	8K entries per device
Backplane Bandwidth	48Gbps
Switching Features	Auto MDI/MDIX MAC address auto-learning and auto-aging Half and Full Duplex
Power Supply	Rated voltage: 100-240 V, 50/60 Hz Maximum voltage: 90-264 V, 50/60 Hz
Dimensions (W X D X H)	13 Inch, 1U rack-mount size



Energy-Saving



Plug & Play

AR-GS216

16-Port Gigabit Rackmount Switch

Standards	IEEE 802.3, IEEE 802.3u, IEEE 802.3ab, IEEE 802.3x
Interfaces	16 x 10/100/1000Base-T Port
Forwarding Performance	26.19Mpps
MAC Address Table	8K entries per device
Backplane Bandwidth	32Gbps
Switching Features	Auto MDI/MDIX MAC address auto-learning and auto-aging Half and Full Duplex
Power Supply	Rated voltage: 100-240 V, 50/60 Hz Maximum voltage: 90-264 V, 50/60 Hz
Dimensions (W X D X H)	13 Inch, 1U rack-mount size



Energy-Saving



Plug & Play



AR-GS108

8-Port Gigabit Desktop Switch

Standards	IEEE 802.3, IEEE 802.3u, IEEE 802.3ab, IEEE 802.3x
Interfaces:	8 x 10/100/1000Base-T Port
Forwarding Performance	13.09Mpps
MAC Address Table	8K entries per device
Backplane Bandwidth	16Gbps
Switching Features	Auto MDI/MDIX MAC address auto-learning and auto-aging Half and Full Duplex"
Power Supply	DC 12V 0.5A
Dimensions (W X D X H)	139mm x 76mm x 25.2mm



Energy-Saving



Plug & Play

AR-GS105

5-Port Gigabit Desktop Switch

Standards	IEEE 802.3, IEEE 802.3u, IEEE 802.3ab, IEEE 802.3x
Interfaces:	5 x 10/100/1000Base-T Port
Forwarding Performance	8.18Mpps
MAC Address Table	4K entries per device
Backplane Bandwidth	10Gbps
Switching Features	Auto MDI/MDIX MAC address auto-learning and auto-aging Half and Full Duplex"
Power Supply	DC 12V 0.5A
Dimensions (W X D X H)	90mm x 73mm x 25.2mm



Energy-Saving



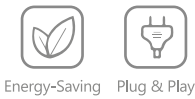
Plug & Play



AR-FS224

24-Port Fast Ethernet Rackmount Switch

Standards	IEEE 802.3, IEEE 802.3u, IEEE 802.3x
Interfaces	24 x 10/100Base-TX Port
Forwarding Performance	3.57Mpps
MAC Address Table	8K entries per device
Backplane Bandwidth	4.8Gbps
Switching Features	Auto MDI/MDIX MAC address auto-learning and auto-aging Half and Full Duplex
Power Supply	Rated voltage: 100-240 V, 50/60 Hz Maximum voltage: 90-264 V, 50/60 Hz
Dimensions (W X D X H)	13 Inch, 1U rack-mount size



AR-FS116

16-Port Fast Ethernet Desktop Switch

Standards	IEEE 802.3, IEEE 802.3u, IEEE 802.3x
Interfaces	16 x 10/100Base-TX Port
Forwarding Performance	2.38Mpps
MAC Address Table	8K entries per device
Backplane Bandwidth	3.2Gbps
Switching Features	Auto MDI/MDIX MAC address auto-learning and auto-aging Half and Full Duplex
Power Supply	DC 12V 0.5A
Dimensions (W X D X H)	160mm x 129.5mm x 42mm





AR-FS108

8-Port Fast Ethernet Desktop Switch

Standards	IEEE 802.3, IEEE 802.3u, IEEE 802.3x
Interfaces	8 x 10/100Base-TX Port
Forwarding Performance	1.2Mpps
MAC Address Table	2K entries per device
Backplane Bandwidth	1.6Gbps
Switching Features	Auto MDI/MDIX MAC address auto-learning and auto-aging Half and Full Duplex
Power Supply	DC 5V 0.5A
Dimensions (W X D X H)	139mm x 76mm x 25.2mm



Energy-Saving



Plug & Play

AR-FS105

5-Port Fast Ethernet Desktop Switch

Standards	IEEE 802.3, IEEE 802.3u, IEEE 802.3x
Interfaces	5 x 10/100Base-TX Port
Forwarding Performance	0.74Mpps
MAC Address Table	2K entries per device
Backplane Bandwidth	1Gbps
Switching Features	Auto MDI/MDIX MAC address auto-learning and auto-aging Half and Full Duplex
Power Supply	DC 5V 0.5A
Dimensions (W X D X H)	90mm x 73mm x 25.2mm



Energy-Saving



Plug & Play



AR-FS109P

9-Port Fast Ethernet PoE Desktop Switch

Standards	IEEE 802.3, IEEE 802.3u, IEEE 802.3x, IEEE802.3af/at
Interfaces	8 x PoE Ethernet ports 1 x UP Link port
Forwarding Performance	1.34Mpps
MAC Address Table	4K entries per device
Backplane Bandwidth	1.8Gbps
Switching Features	Auto MDI/MDIX MAC address auto-learning and auto-aging Half and Full Duplex VLAN ON/OFF
Power Supply	DC 48V 2.5A Power Consumption: <120W Maximum PoE Output Power: 115W
Dimensions (W X D X H)	220mm x 94mm x 28mm



PoE



Energy-Saving



Plug & Play

AR-FS105P

5-Port Fast Ethernet PoE Desktop Switch

Standards	IEEE 802.3, IEEE 802.3u, IEEE 802.3x, IEEE802.3af/at
Interfaces	4 x PoE Ethernet ports, 1 UP Link port
Forwarding Performance	0.74Mpps
MAC Address Table	2K entries per device
Backplane Bandwidth	1Gbps
Switching Features	Auto MDI/MDIX MAC address auto-learning and auto-aging Half and Full Duplex
Power Supply	DC 48V 0.5A Power Consumption: <24W Maximum PoE Output Power: 20W
Dimensions (W X D X H)	137mm x 83.5mm x 26.5mm



PoE



Energy-Saving



Plug & Play



ISP Solution



GPON

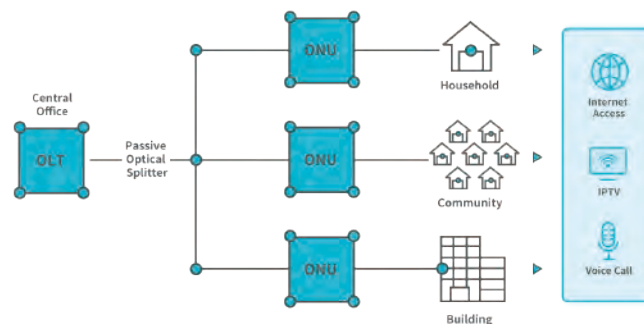
AR-P600

AC1750 Wireless Dual Band Gigabit VoIP
GPON Router



Access to Fiber Optical Network

Support downstream 2.5Gbps and upstream to 1.25Gbps with transmission distance up to 20km. Higher bandwidth support makes it possible to integrate and provide more additional services with the same device.



A GPON Device with the Wireless Function

As a GPON device, the AR-P600 also supports the function of a dual band wireless router. It provides combined wireless speed of up to 1750Mbps at 2.4GHz and 5GHz bands concurrently. (2.4GHz: Up to 450Mbps; 5GHz: Up to 1200Mbps)

Three Advantages:



"Two" combined into "One"



Reduce costs on devices



Easier management using one backstage page



Support OMCI (ONU management and control interface) Remote Management



Configuration Management



Fault Management



Performance Management



Security Management

Maximize Utility through DBA and QoS Features



Support DBA via T-CONT and GEM ports

Using QoS Feature to Set Priorities for Network Tasks

Highest Wireless Speed	1750Mbps
Frequency	2.4GHz and 5GHz
Antennas	4 x 5dBi dual band external antennas
Interface	1 x SC/APC GPON Port 4 x 10/100/1000Mbps LAN Ports 1 x USB2.0 Port 2 x FXS Port
WPS Button	Support
Power Supply	DC 12V 2A
Security	WEP, WPA / WPA2, WPA-PSK/ WPA2-PSK encryption



QoS



Parental Controls



IPv6



Guest Network



VoIP



USB Sharing



AR-P400

AC1200 Wireless Dual Band Gigabit VoIP GPON Router



QoS



Parental Controls



IPv6



Guest Network



VoIP



USB Sharing

Highest Wireless Speed	1200Mbps
Frequency	2.4GHz and 5GHz
Antennas	4 x 5dBi external antennas
Interface	1 x SC/APC GPON Port 4 x 10/100/1000Mbps LAN Ports 1 x USB2.0 Port 2 x FXS Port
WPS Button	Support
Power Supply	DC 12V 1.5A
Security	WEP, WPA / WPA2, WPA-PSK/ WPA2-PSK encryption



AR-P220

N300 Wireless Gigabit VoIP GPON Router

Highest Wireless Speed	300Mbps
Frequency	2.4GHz
Antennas	2 x 3dBi internal antennas
Interface	1 x SC/APC GPON Port "1 x 10/100/1000Mbps LAN Ports 1 x 10/100Mbps LAN Ports" 1 x FXS Port
WPS Button	Support
Power Supply	DC 12V 1A
Security	WEP, WPA / WPA2, WPA-PSK/ WPA2-PSK encryption



QoS



Parental Controls



IPv6



Guest Network



VoIP

AR-P200CA

N300 Wireless Gigabit VoIP CATV GPON Router

Highest Wireless Speed	300Mbps
Frequency	2.4GHz
Antennas	2 x 5dBi external antennas
Interface	1 x SC/APC GPON Port 4 x 10/100/1000Mbps LAN Ports 1 x RF Port 1 x USB2.0 Port 2 x FXS Port
WPS Button	Support
Power Supply	DC 12V 1.5A
Security	WEP, WPA / WPA2, WPA-PSK/ WPA2-PSK encryption



QoS



Parental Controls



IPv6



Guest Network



VoIP



USB Sharing



RF Port



AR-P200

N300 Wireless Gigabit VoIP GPON Router

Highest Wireless Speed	300Mbps
Frequency	2.4GHz
Antennas	2 x 5dBi external antennas
Interface	1 x SC/APC GPON Port 4 x 10/100/1000Mbps LAN Ports 1 x USB2.0 Port 2 x FXS Port
WPS Button	Support
Power Supply	DC 12V 1A
Security	WEP, WPA / WPA2, WPA-PSK/ WPA2-PSK encryption



QoS



Parental Controls



IPv6



Guest Network



VoIP



USB Sharing

AR-P01

One Port Wired Gigabit GPON Terminal

Interface	1 x SC/APC GPON Port 1 x 10/100/1000Mbps LAN Ports
Power Supply	DC 12V 0.5A



xDSL Modem Routers

AR-V600L

AC1750 Wireless Dual Band Gigabit VoIP
VDSL LTE Modem Router

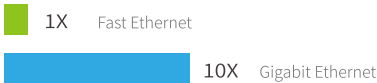
All-in-One Device

Today, you only need one device that satisfies all your networking needs. All Airpho modem routers are designed to save your costs and make networking easier by integrating the functionality of ADSL/VDSL, wireless router and 4-port switch in one device.



10x Faster Gigabit Ethernet

Move up to a gigabit (1000Mbps) network increase your potential throughput tenfold, minimizing your transfer time and greatly enhancing your ability to stream high-bandwidth files to connected devices without interference.





Support Triple Play Service

The AR-V600L supports 2 FXS ports that enables VoIP features, allowing operators to deliver triple play service (data, voice, and video) simultaneously via one device.

Two Broadband Connectivity Options

The hybrid modem supports VDSL and LTE two connectivity options that allows you to select either access service or to switch service at a low cost.

Uplink Standard	VDSL2, ADSL2/2+, ADSL, CAT4
Highest Wireless Speed	1750Mbps
Frequency	2.4GHz and 5GHz
Antennas	3 x 5dBi dual band external antennas 2 x 5dBi 4G LTE external antennas
Interface	1 x RJ-11 DSL Port 4 x 10/100/1000Mbps LAN Port 2 x FXS ports 1 x SIM Card Slot
WPS Button	Support
Power Supply	DC 12V 2A
Security	WEP, WPA / WPA2, WPA-PSK/ WPA2-PSK encryption



IPv6



VoIP



4G LTE



Parental
Controls



Guest
Network



QoS



AR-V600
AC1750 Wireless Dual Band Gigabit VoIP
VDSL Modem Router

DSL Standards	VDSL2, ADSL2/2+, ADSL
Highest Wireless Speed	1750Mbps
Frequency	2.4GHz and 5GHz
Antennas	3 x 5dBi dual band external antennas
Interface	1 X RJ-11 DSL Port 1 x 10/100/1000Mbps WAN Port 4 x 10/100/1000Mbps LAN Port 1 x USB3.0 ports 2 x FXS ports
WPS Button	Support
Power Supply	DC 12V 2A
Security	WEP, WPA / WPA2, WPA-PSK/ WPA2-PSK encryption



QoS



Guest
Network



Parental
Controls



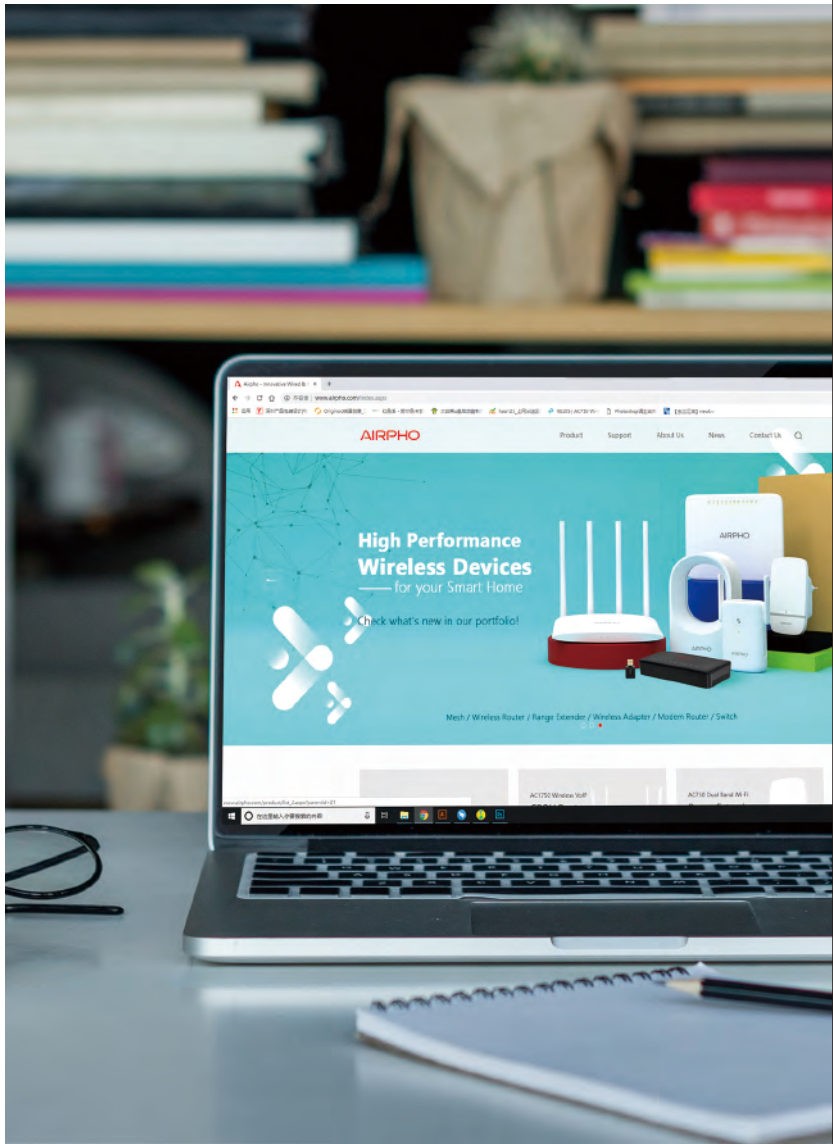
IPv6



VoIP



USB Sharing





AR-V400

AC1200 Wireless Dual Band Gigabit VDSL Modem Router

DSL Standards	VDSL2, ADSL2/2+, ADSL
Highest Wireless Speed	1200Mbps
Frequency	2.4GHz and 5GHz
Antennas	4 x 3dBi internal antennas
Interface	1 X RJ-11 DSL Port 1 x 10/100/1000Mbps WAN Port 4 x 10/100/1000Mbps LAN Port 1 x USB2.0 Port
WPS Button	Support
Power Supply	DC 12V 1.5A
Security	WEP, WPA / WPA2, WPA-PSK/ WPA2-PSK encryption



USB Sharing



QoS

Guest
NetworkParental
Controls

IPv6



AR-V400V

AC1200 Wireless Dual Band Gigabit VoIP VDSL Modem Router

DSL Standards	VDSL2, ADSL2/2+, ADSL
Highest Wireless Speed	1200Mbps
Frequency	2.4GHz and 5GHz
Antennas	2 x 5dBi dual band external antennas
Interface	1 X RJ-11 DSL Port 1 x 10/100/1000Mbps WAN Port 4 x 10/100/1000Mbps LAN Port 1 x USB2.0 Port 2 x FXS Ports
WPS Button	Support
Power Supply	DC 12V 1.5A
Security	WEP, WPA / WPA2, WPA-PSK/ WPA2-PSK encryption



QoS



Guest
Network



Parental
Controls



IPv6



VoIP



USB Sharing

AR-V200V

N300 Wireless VoIP VDSL Modem Router

DSL Standards	VDSL2, ADSL2/2+, ADSL
Highest Wireless Speed	300Mbps
Frequency	2.4GHz
Antennas	2 x 3dBi internal antennas
Interface	1 X RJ-11 DSL Port 1 x 10/100/1000Mbps WAN Port 4 x 10/100Mbps LAN Port 1 x USB2.0 ports 2 x FXS ports
WPS Button	Support
Power Supply	DC 12V 1A
Security	WEP, WPA / WPA2, WPA-PSK/ WPA2-PSK encryption



QoS



Guest
Network



Parental
Controls



IPv6



VoIP



USB Sharing



AR-V200

N300 Wireless VDSL Modem Router

DSL Standards	VDSL2, ADSL2/2+, ADSL
Highest Wireless Speed	300Mbps
Frequency	2.4GHz
Antennas	2 x 3dBi internal antennas
Interface	1 X RJ-11 DSL Port 1 x 10/100/1000Mbps WAN Port 4 x 10/100Mbps LAN Port
WPS Button	Support
Power Supply	DC 12V 0.5A
Security	WEP, WPA / WPA2, WPA-PSK/ WPA2-PSK encryption



QoS

Guest
NetworkParental
Controls

IPv6

AR-D200

N300 Wireless ADSL2+ Modem Router

DSL Standards	ADSL2/2+, ADSL
Highest Wireless Speed	300Mbps
Frequency	2.4GHz
Antennas	2 x 5dBi external antenna
Interface	1 X RJ-11 DSL Port 4 x 10/100Mbps LAN Port
WPS Button	Support
Power Supply	DC 12V 0.5A
Security	WEP, WPA / WPA2, WPA-PSK/ WPA2-PSK encryption



QoS

Guest
NetworkParental
Controls

IPv6


AR-GW600

AC1750 Wireles Dual Band Gigabit VoIP Gateway


Highest Wireless Speed	1750Mbps
Frequency	2.4GHz and 5GHz
Antennas	3 x 5dBi dual band external antennas
Interface	1 x 10/100/1000Mbps WAN Port 4 x 10/100/1000Mbps LAN Ports 2 x FXS Ports 1 x USB3.0 Port
WPS Button	Support
Power Supply	DC 12V 2A
Security	WEP, WPA / WPA2, WPA-PSK/ WPA2-PSK encryption



USB Sharing



QoS




Parental Controls



IPv6



Guest Network



VoIP





AR-GW400

AC1200 Wireless Dual Band Gigabit VoIP Gateway

Highest Wireless Speed	1200Mbps
Frequency	2.4GHz and 5GHz
Antennas	2 x 5dBi dual band external antennas
Interface	1 x 10/100/1000Mbps WAN Port 4 x 10/100/1000Mbps LAN Ports 2 x FXS Ports 1 x USB3.0 Port
WPS Button	Support
Power Supply	DC 12V 1.5A
Security	WEP, WPA / WPA2, WPA-PSK/ WPA2-PSK encryption



USB Sharing



QoS


Parental
Controls


IPv6


Guest
Network


VoIP

AR-GW200

N300 Wireless VoIP Gateway

Highest Wireless Speed	300Mbps
Frequency	2.4GHz
Antennas	2 x 3dBi Internal antennas
Interface	1 x 10/100Mbps WAN Port 4 x 10/100Mbps LAN Ports 2 x FXS Ports 1 x USB2.0 Port
WPS Button	Support
Power Supply	DC 12V 1A
Security	WEP, WPA / WPA2, WPA-PSK/ WPA2-PSK encryption



USB Sharing



QoS


Parental
Controls


IPv6


Guest
Network


VoIP



Professional
Manufacturing

Airpho owns a 5,500 sqm factory, which maintains seven SMT automation production lines with a capacity of more than 12 million devices per year. 9 fully equipped test labs are set up to ensure high quality products to be delivered to the company's valued customers. The company received ISO9001-2000 certification in 2014 and has been

operating strictly under these standards. All products are qualified to meet different international standards like CE, FCC, CQC etc, satisfying needs of various customers from different countries.



AIRPHO



AIRPHO

AIRPHO TECHNOLOGY CO.,LTD

Add: 3/F, Building 15th, Wangtang Industry Park, Xili Street, Nanshan District, Shenzhen, Guangdong, China
Email: sales@airpho.com Web: www.airpho.com

Copyright©2019 Airpho Technology Co., Ltd. All right reserved.